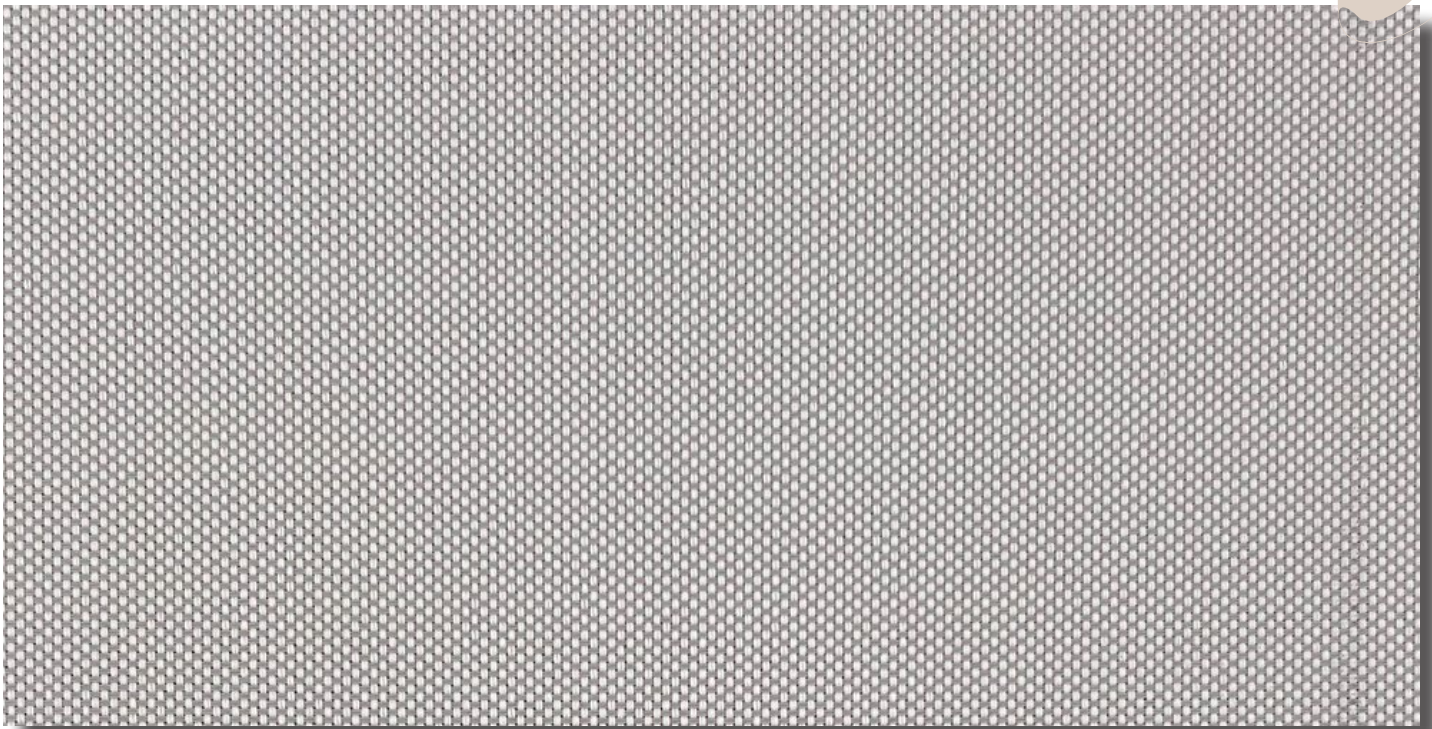


TEXTILES

Técnicos & Decorativos

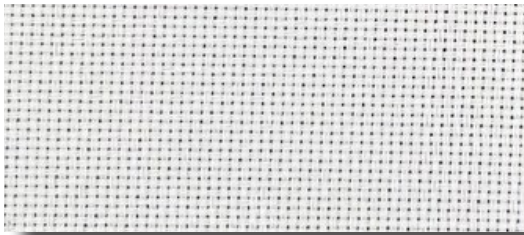
IRUÑA *TEX*



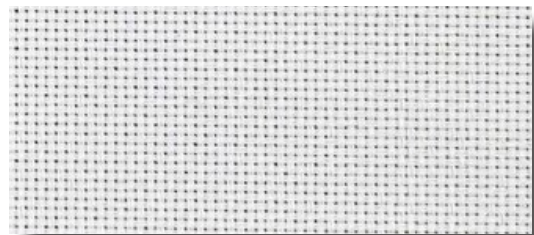


Color 05

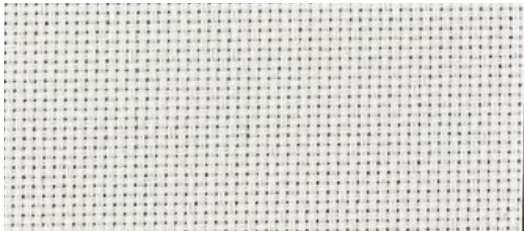
CARPO 3%



Color 01



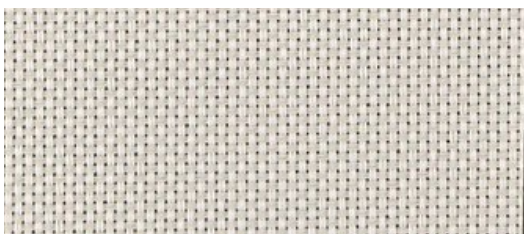
Color 04



Color 02



Color 05



Color 03

DESIGN: RBURER 019 %3

DATE: 28.11.2023
REPORT NO: 3336

CERTIFIED



PREPARED BY KÜBRA ÜNLÜ PHYSICS LABORATORY	APPROVED FULYA TUNALI LABORATORY CHIEF

DESIGN: RBURER 019 %3

DATE: 28.11.2023
REPORT NO: 3336

PROPIEDADES TÉCNICAS	
DISEÑO	CARPO RBURER 019 %3
ANCHO TEJIDO (CM)	300
PESO (GR/M ²)(ISO 3801)	300 ±%1
COMPOSICIÓN	284 ±%5
"RESISTENCIA A LA TENSIÓN (URDIMBRE/TRAMA) " (EN ISO 13937-3)	WARP FORCE : 1867 ± %10
	WEFT FORCE : 2141 ± %10
"RESISTENCIA AL DESGARRO (URDIMBRE/TRAMA) " (EN ISO 5084)	WARP: 182 ± %10
	WEFT: 185 ± %10
ESPESOR (mm) (EN ISO 5084)	0,42 ± % 10
FACTOR DE APERTURA	%3
TRATAMIENTO AL FUEGO	NFPA 701

DISEÑO	COLOR	"LIGHT FAST-NESS"	As (%)	Rs (%)	Ts (%)	gtot-A	Fc-A	gtot-B	Fc-B	gtot- C	Fc-C	gtot- D	Fc-D	Tuv (%)	Tv (%)	Rv (%)
RBURER 009 %3	5	6	28,88	49,11	22,01	0,46	0,54	0,46	0,60	0,41	0,70	0,27	0,83	4,37	13,26	46,40

PREPARED BY	APPROVED
KÜBRA ÜNLÜ PHYSICS LABORATORY	FULYA TUNALI LABORATORY CHIEF