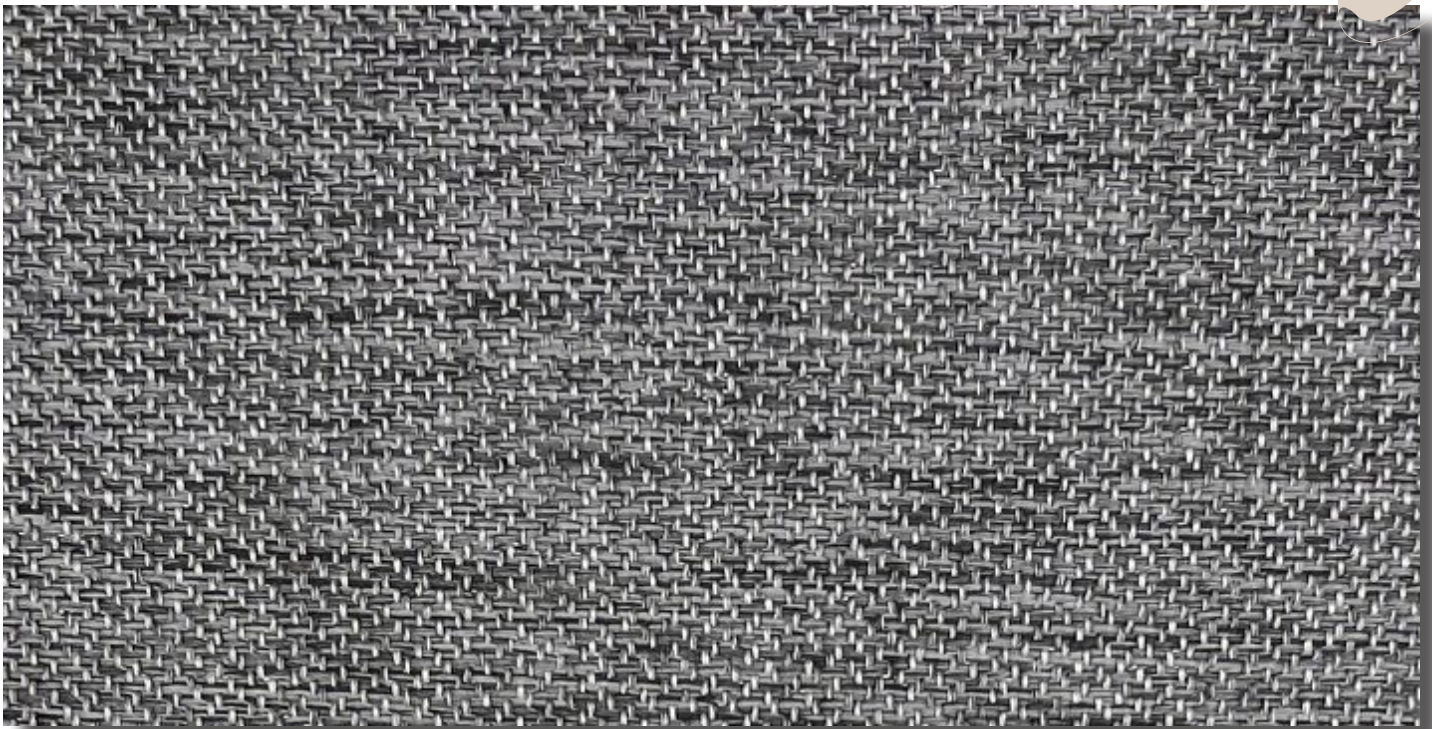


# TEXTILES

Técnicos & Decorativos

IRUÑA *TEX*





Color 12

**DAPHNE**

**BLACKOUT**



Color 09



Color 15



Color 11



Color 12



Color 05

DESIGN: BSM 323

DATE: 29.11.2023  
REPORT NO: 3332**CERTIFIED**

<b>PREPARED BY</b>	<b>APPROVED</b>
<b>KÜBRA ÜNLÜ PHYSICS LABORATORY</b>	<b>FULYA TUNALI LABORATORY CHIEF</b>

**DESIGN: BSM 323****DATE: 29.11.2023**  
**REPORT NO: 3332**

PROPIEDADES TÉCNICAS	
DISEÑO	DAPHNE BSM 323
ANCHO TEJIDO (CM)	300
PESO (GR/M <sup>2</sup> )(ISO 3801)	400 ±%5
COMPOSICIÓN	FABRIC: %50 ACRYLIC COATING : %50
"RESISTENCIA A LA TENSIÓN (URDIMBRE/TRAMA) " (EN ISO 13934-1)	WARP FORCE : 1650 ± %10
	WEFT FORCE : 1600 ± %10
"RESISTENCIA AL DESGARRO (URDIMBRE/TRAMA) " (EN ISO ISO 13937-3)	WARP: 130 ± %10
	WEFT: 120 ± %10
ESPESOR (mm) (EN ISO 5084)	0,53 ± % 10

DISEÑO	COLOR	"LIGHT FASTNE SS"
BSM 323	9	Kuma Yüzey: 4 BO yüzeyi: >5
BSM 323	11	Kuma Yüzey: 4 BO yüzeyi: >5
BSM 323	5	Kuma Yüzey: 4 BO yüzeyi: >5
BSM 323	15	Kuma Yüzey: 4 BO yüzeyi: >5
BSM 323	12	Kuma Yüzey: 4 BO yüzeyi: >5

PREPARED BY	APPROVED
<b>KÜBRA ÜNLÜ</b> <b>PHYSICS LABORATORY</b>	<b>FULYA TUNALI</b> <b>LABORATORY CHIEF</b>