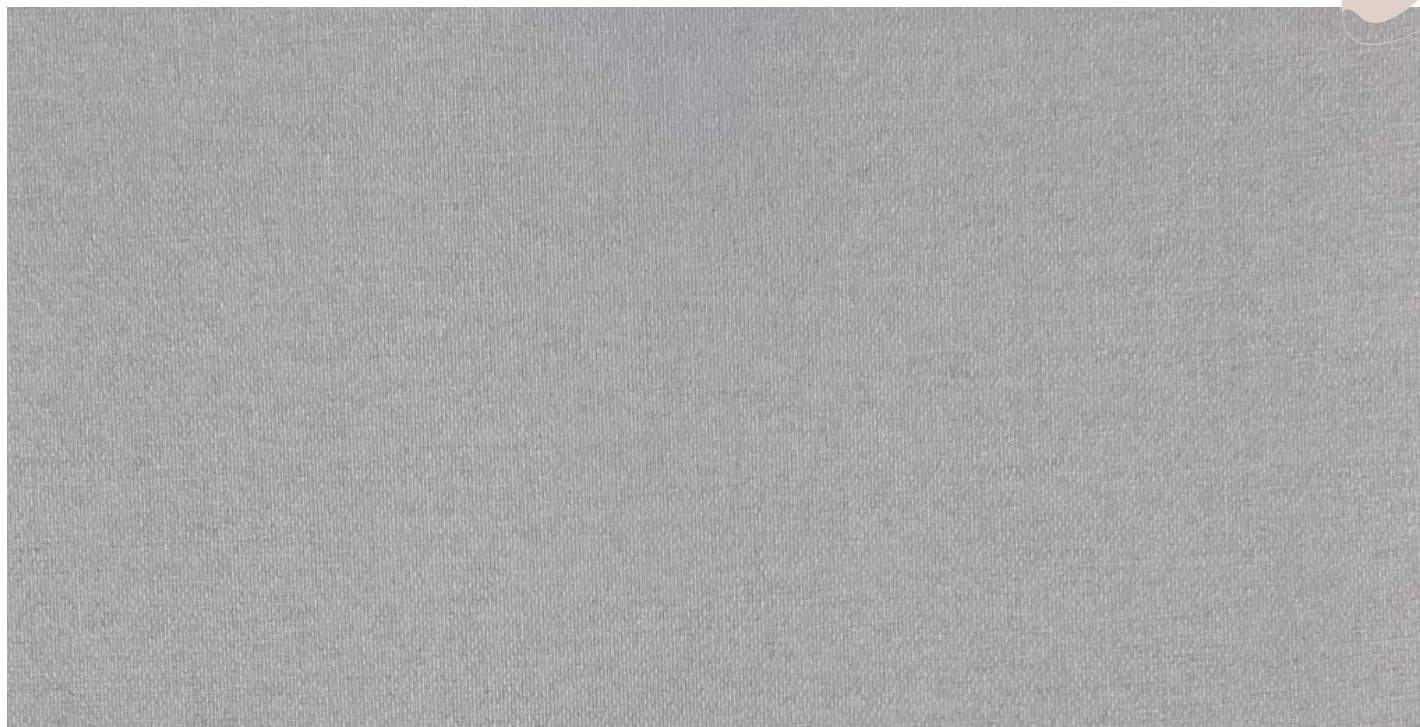


TEXTILES

Técnicos & Decorativos

IRUÑA *TEX*

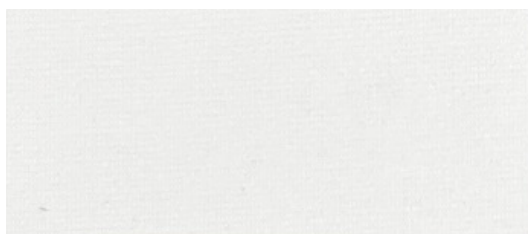




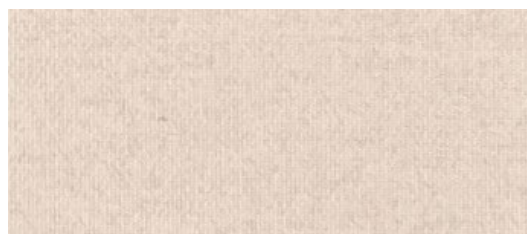
Color 13

TITAN

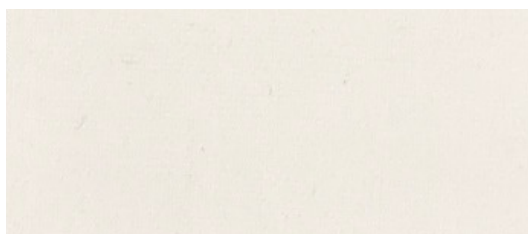
BLACKOUT



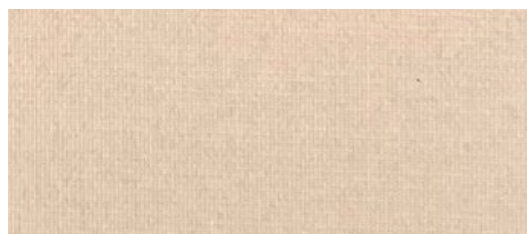
Color 01



Color 04



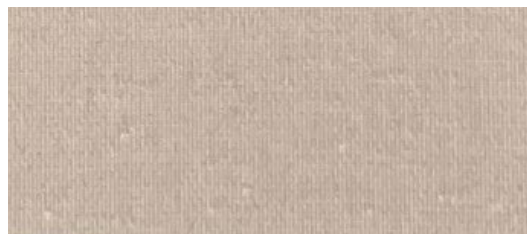
Color 02



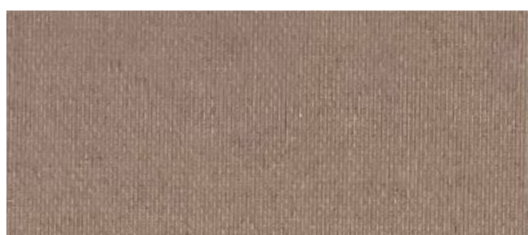
Color 05



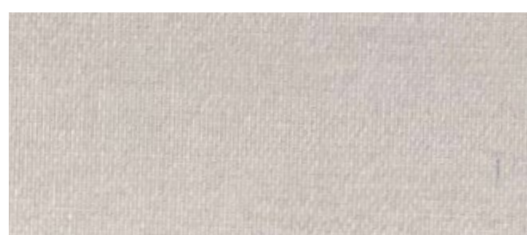
Color 03



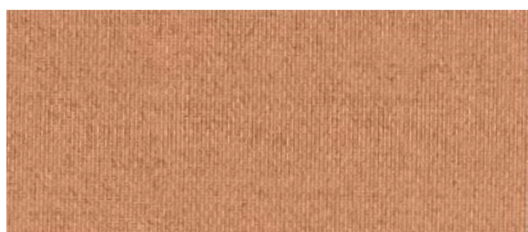
Color 06



Color 07



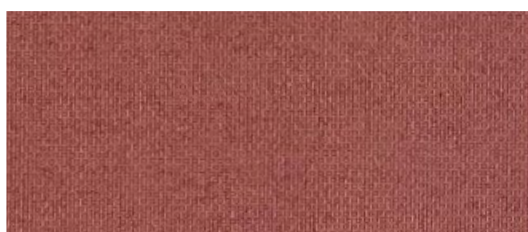
Color 12



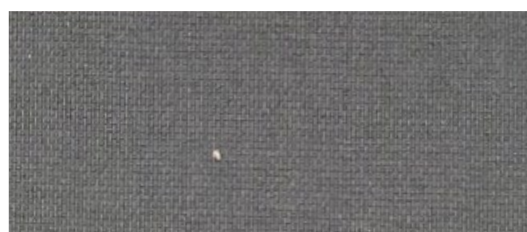
Color 08



Color 13



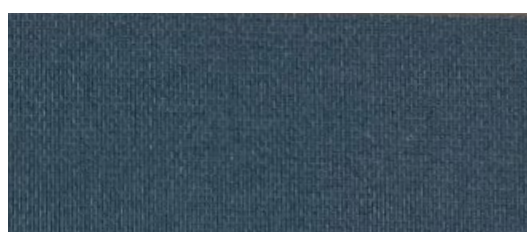
Color 09



Color 14



Color 10



Color 15



Color 11



Color 16



Color 17

DESIGN: KB000

DATE: 29.11.2023

REPORT NO: 3334

CERTIFIED

PREPARED BY	APPROVED
KÜBRA ÜNLÜ PHYSICS LABORATORY	FULYA TUNALI LABORATORY CHIEF

DESIGN: KB000
DATE: 29.11.2023
REPORT NO: 3334

PROPIEDADES TÉCNICAS	
DISEÑO	TITAN KB000
PESO (GR/M²)(ISO 3801)	339 ± %5
COMPOSICIÓN	FABRIC %33 - ACRYLIC COATING %67
ANCHO TEJIDO	300 ± % 1
"RESISTENCIA A LA TENSIÓN (URDIMBRE/TRAMA) (EN ISO 13934-1)	URDIMBRE: 1032 ±%10
	TRAMA: 627 ±%10
"RESISTENCIA AL DESGARRO (URDIMBRE/TRAMA) (EN ISO 13934-3)	URDIMBRE: 27 ±%10
	TRAMA: 21 ±%10
ESPESOR (mm) (EN ISO 5084)	300 ± % 1

DISEÑO	COLOR	"LIGHT FASTNE SS"
K8000	1	6
K8000	2	6
K8000	3	6
K8000	4	6
K8000	5	6
K8000	6	6
K8000	7	6
K8000	8	6
K8000	9	6
K8000	10	6
K8000	11	6
K8000	12	6
K8000	13	6
K8000	14	6
K8000	15	6
K8000	16	6
K8000	17	6

PREPARED BY	APPROVED
KÜBRA ÜNLÜ PHYSICS LABORATORY	FULYA TUNALI LABORATORY CHIEF